

**LEONARD LESTER
ALPINE ARTIST**



**IMAGES OF ART BY
LEONARD LESTER
FROM THE COLLECTION OF
KENNETH C. SCHULTE**

The following eighteen images of art were reproduced in the form of printed cards and 3 1/2" x 5" prints from photographs, which, in turn, were copied on a commercial copier. The original art, spanning a period from 1896 to the 1930s, was done in various media, including oil, watercolor and pastel. A few are in the collection of Ken Schulte (indicated by an asterisk); most were copied around 1971 at the Pacific Beach studio of Leonard Lester's widow, Marian Lester.



"Moonlight at Alpine"
Oil
Bell Bluff Mountain in Background
1930's
Original Painting 21 1/2" x 28"
*

"Sapphire and Gold"
Oil
Bell Bluff Mountain in Background
1930's
Leonard sometimes did the same
scene more than once.

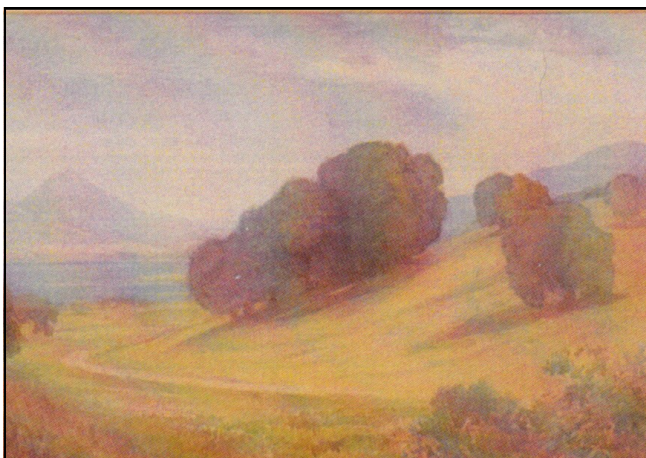
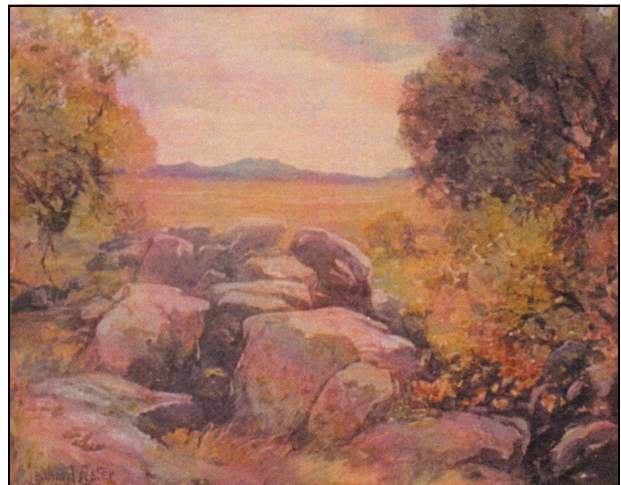


Landscape at Santa Barbara
Oil
1906
Original Painting 16" x 20"
*



**“Silver Star”
Oil
Point Loma circa 1920s
Original 16” x 20”

**Alpine Landscape
Watercolor
1930s**



**“Cuyamaca”
Watercolor
Stonewall Peak in background
1938
Original 14” x 21”



Point Loma Landscape
Oil
Circa 1920s

“From Dehesa Road Looking West”
Pastel
1936



“Ciba Tree”
San Juan, Cuba
Watercolor
Circa 1906—1918



“Green Pastures and Still Waters”
Watercolor
Date and Location Unknown



“November Birches”
Oil
Circa 1901—1902
Cumberland, England

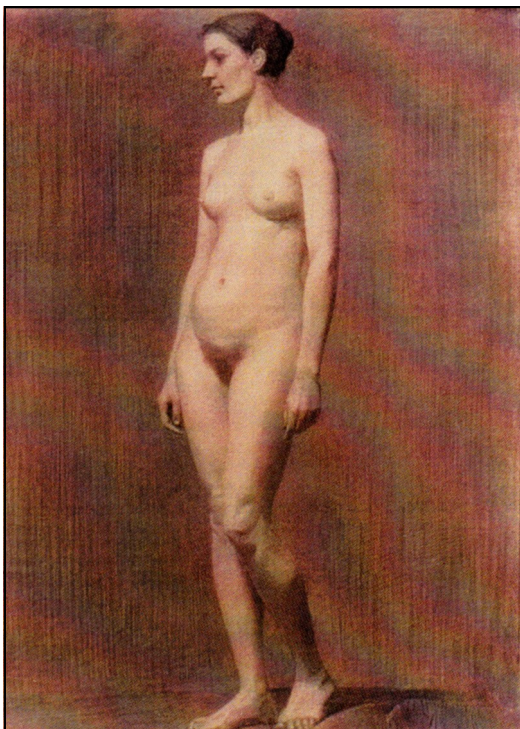
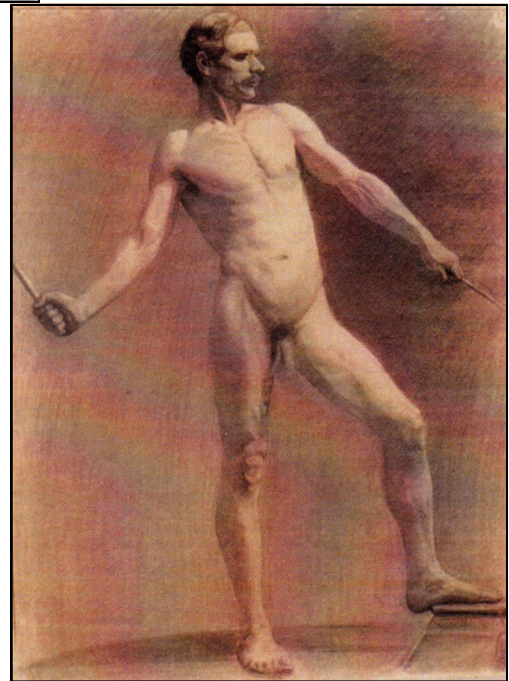


**Untitled drawing of foxgloves, re-
produced on card.**

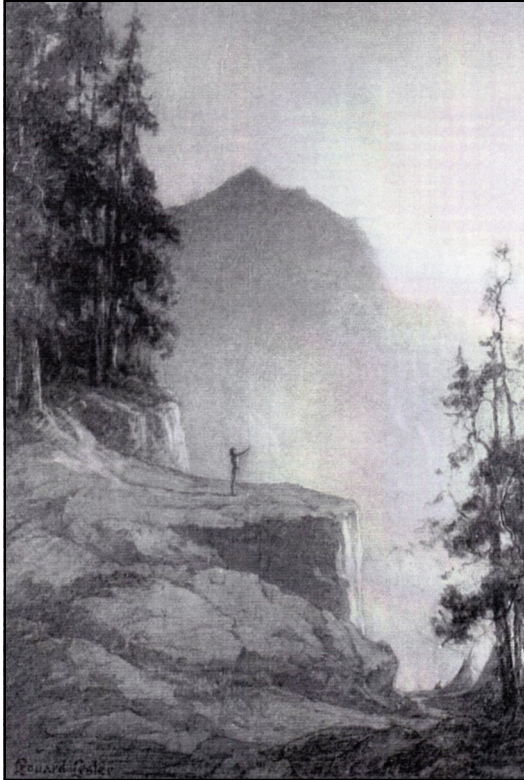


Untitled watercolor of church interior from a postcard

**Male figure in charcoal
Circa 1896**



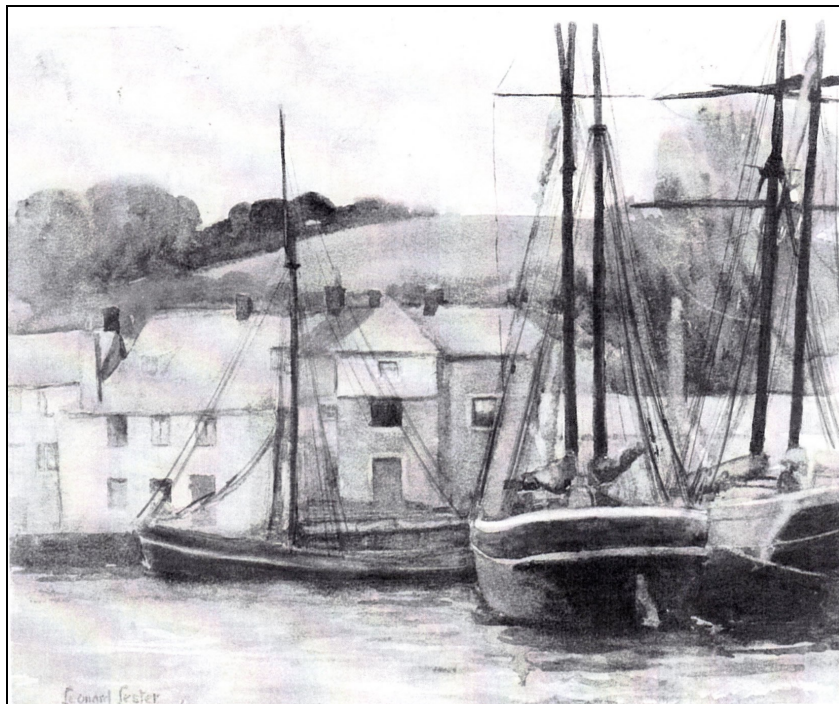
Female figure in charcoal



“Salutation of the Dawn”

**Reproduced on card with matt finish.
Created to accompany the poem by the Hindu
Indian poet Kalidasa, who lived in the 4th,
5th or 6th century:**

**Listen to the exhortation of the dawn!
Look to this day, for it is life,
The very life of life!
In its brief course lie all the verities
And all the realities of your existence;
The bliss of growth; the glory of action;
The splendor of beauty.
For yesterday is but a dream,
And tomorrow is only a vision,
But today well-lived makes every yesterday
A dream of happiness,
And every tomorrow a vision of hope.
Look well, therefore, to this day,
Such is the salutation of the dawn.**



“Padstow Harbor”

Watercolor

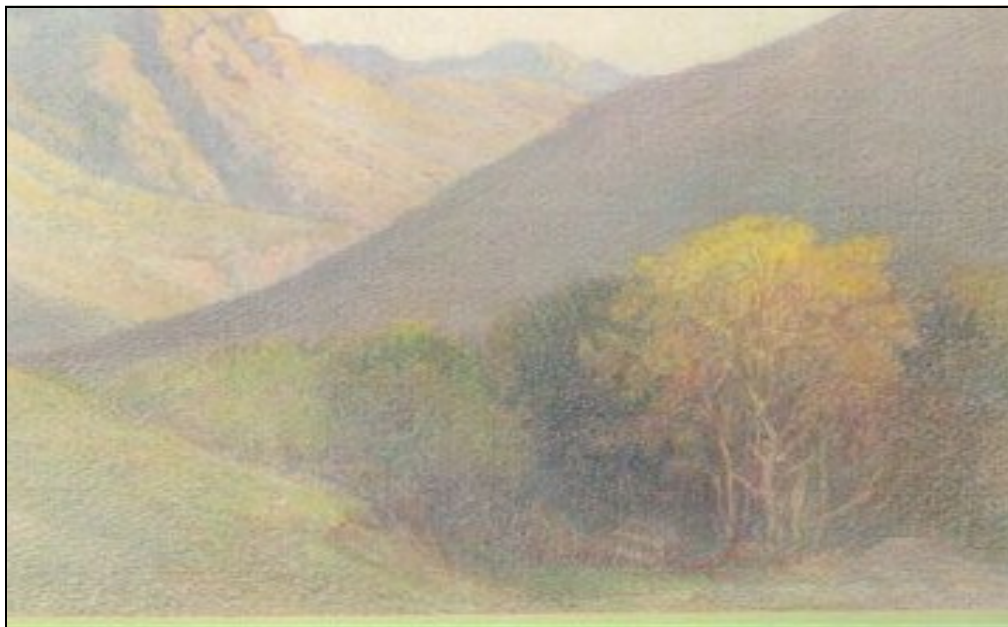
England—pre 1903

Reproduced on 6 1/4” x 7 1/2” cards



“Mayborough Mound”
Watercolor
Cumberland, England—1902
Reproduced on 6 1/4” x 7 1/2” cards

The following five drawings were all done in pastels (colored pencil and possibly some crayon) and were purchased from the artist's widow, Marian (Plummer) Lester unless otherwise noted.

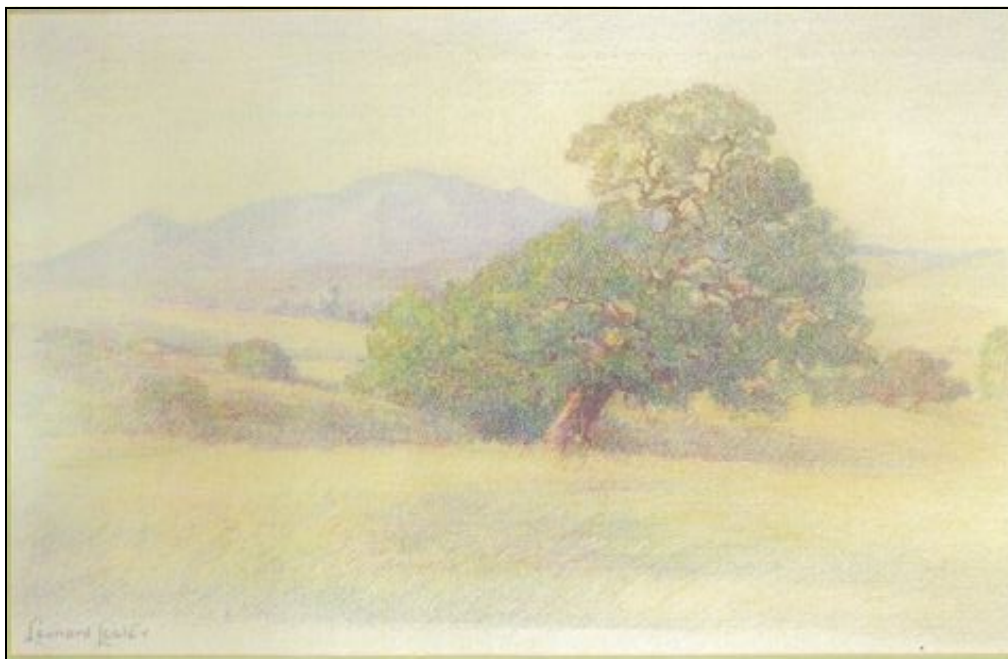


“Sunshine and Shadows at Japatul Valley”

1930s

Original 11” x 17”

Purchased by Ken Schulte’s mother for \$60 from a display at Alpine.

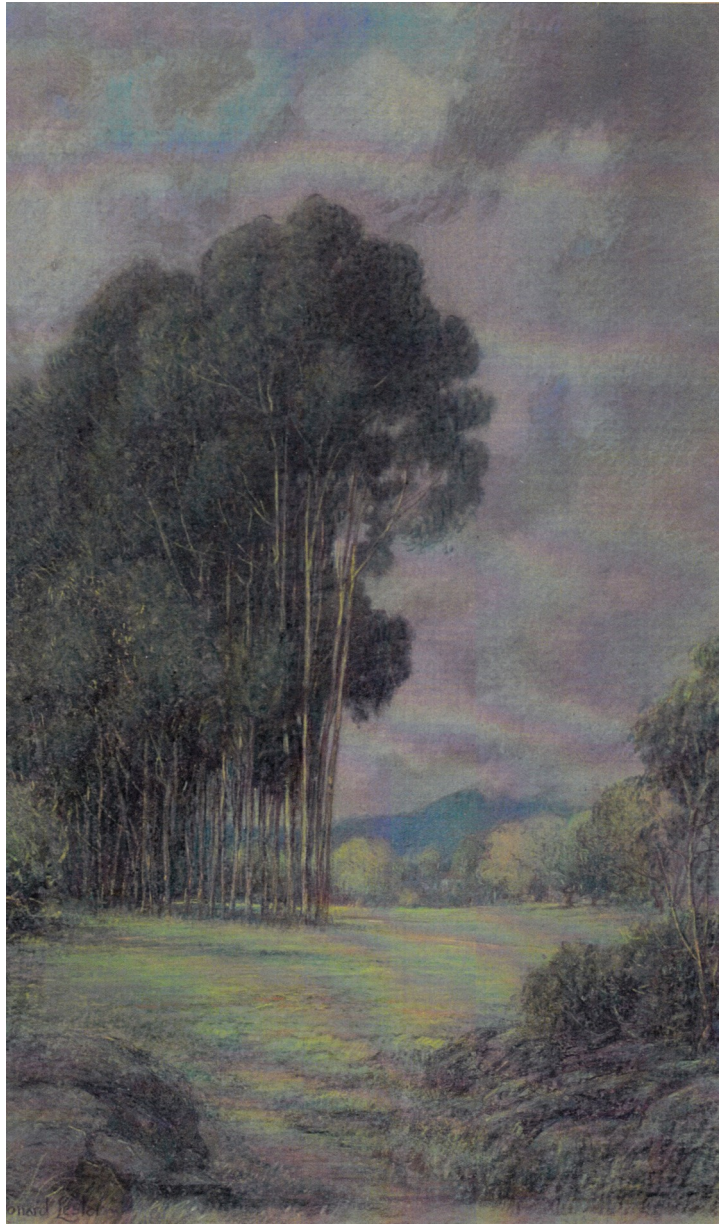


“Leaning Oak”

Looking toward El Capitan Mountain—1930s

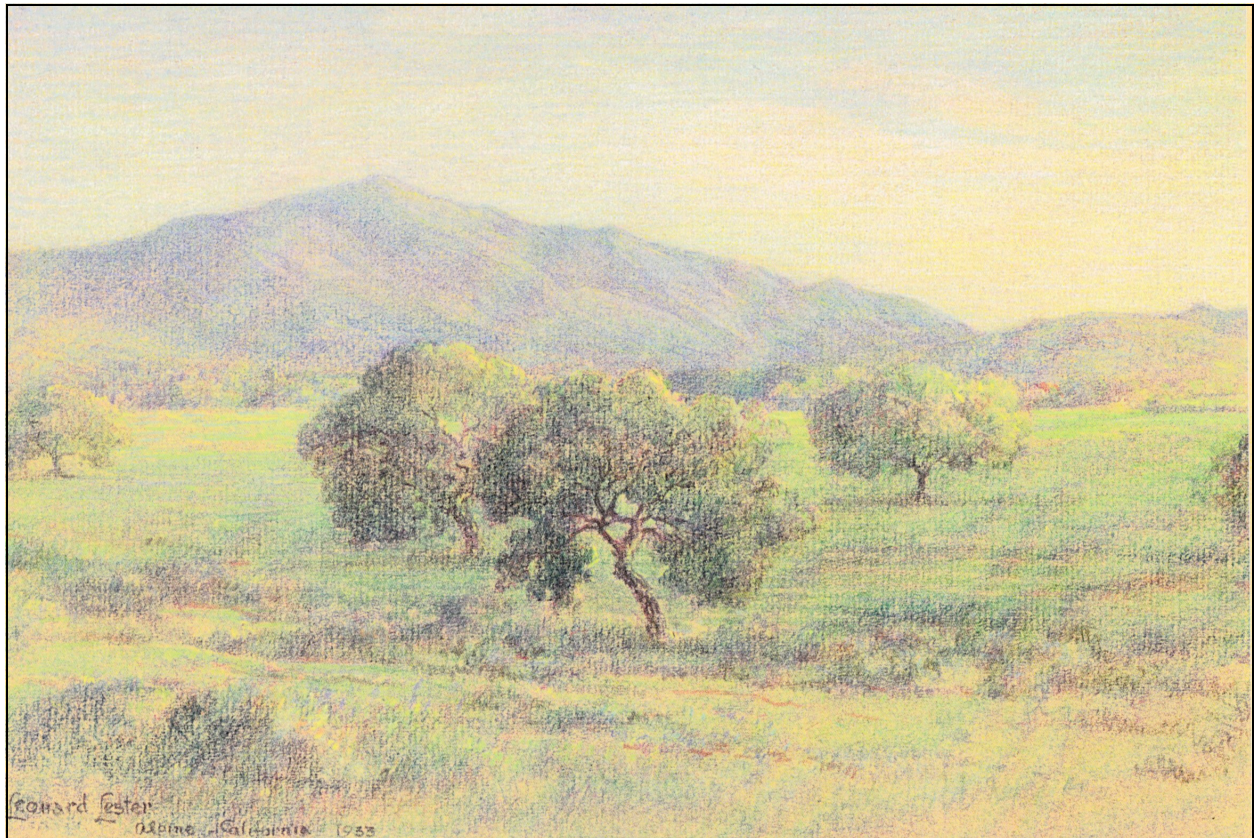
Original 11” x 17”

Marian told Ken Schulte that the tree fell over the day after Leonard drew this picture.



No title for this landscape. It simply read “Alpine” on the back of the drawing. Eucalyptus trees in middle-ground, and that looks like it could be Viejas Mountain covered in clouds. Circa 1932-1936.

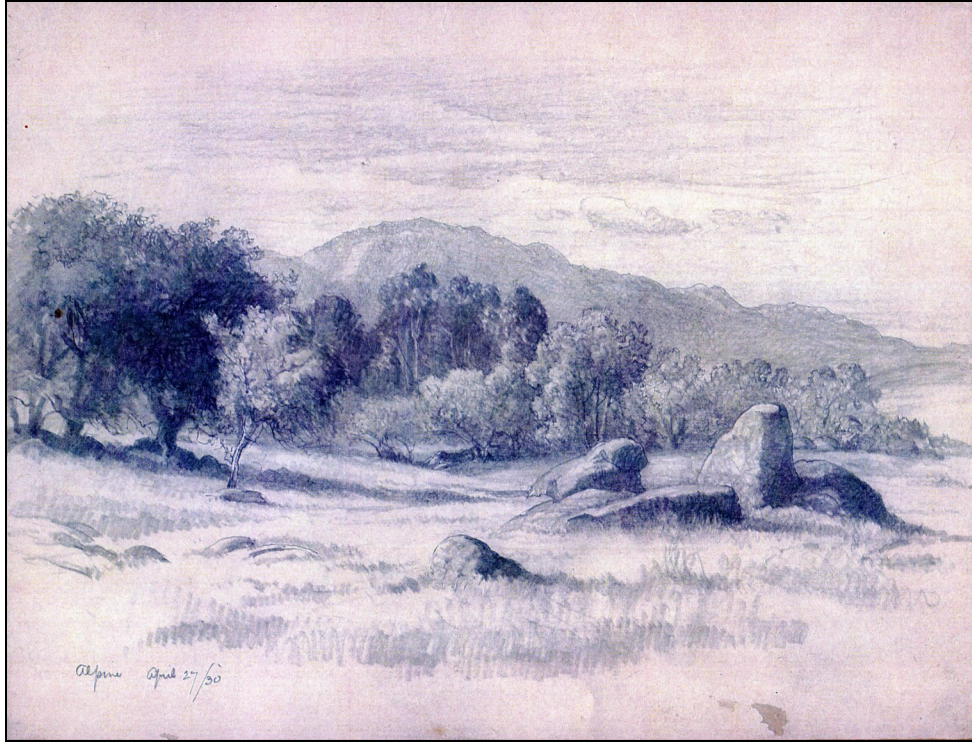
Aunt Sylvia Head Williams gave this drawing to Kenneth Schulte as a gift.



“Las Viejas Mountain”
1933
Original 9” x 13”



Point Loma Seascape
September 13, 1928
Original 11" x 12 1/2"



"Squaw Rock"
Pencil Drawing—1930



Alpine Area
Pencil Drawing—1932