

# TATTERED TIDBITS

ALPINE HISTORICAL SOCIETY

Volume 8, Issue 1

Carol Walker, Editor

January 2014

### Upcoming events:

- February 16<sup>th</sup>—A Glimpse into the Life of Alpine's Famous Artist—Justin Gruelle
- April 27<sup>th</sup>—Quarterly Pot-luck Meeting
- June 7—Alpine History Day Celebration

### Open House at the Museum:

- February 22<sup>nd</sup> & 23<sup>rd</sup>
- March 29<sup>th</sup> & 30<sup>th</sup>
- April 26<sup>th</sup>

### Inside this issue:

President's Annual Report	2
Justin Gruelle—A Diversified Artist	2
Membership Letter, Contact List and Return Envelope for Donations/Renewals	1 N S E R T
Parade Photos	3
Dr. Nichols' Descendants Visit Alpine	3

## Special Event Scheduled for February 16<sup>th</sup>

Paul William "Bill" Smart, along with his wife Diane, will travel from their home in Florida to speak at the February 16<sup>th</sup> meeting of the Historical Society. Bill is the nephew of Justin Gruelle, Alpine's most famous artist. Gruelle had a home and studio on Lilac Lane in Alpine from 1955 until his death in 1978. Many examples of his work are on display in the museum and will be available at the meeting for attendees to view.

Bill served in the Navy during World War II and graduated from the University of Cincinnati in 1952. He received a Master of Fine Arts degree from Yale University in 1954 and served as President of Smart-Williams Associates, a graphic design/advertising

agency in Cincinnati. He is the author of an essay about Richard B. Gruelle, Justin Gruelle's father, and the Gruelle family of artists and has an extensive collection of creative works by the family.

When his father died at a young age, Justin Gruelle became his mentor. Gruelle's wife, Mabel, was Bill's mother's sister and Bill was a frequent guest in their Connecticut home and studio and accompanied them on painting expeditions to New York, Massachusetts and Maine. After his mother moved to Alpine and bought a home near the Gruelle studio, Bill sometimes visited Alpine.

The event will be held at the Alpine Woman's Club, 2156 Alpine Boulevard, from 1:00

to 3:00 p.m. on Sunday, February 16<sup>th</sup>. A catered lunch will be provided and the cost is \$8.00 for adults and \$5.00 for children or students. If you plan to attend, please make your reservation, no later than February 12, 2014, by calling Carol Morrison at (619)445-2544 or [info@alpinehistory.org](mailto:info@alpinehistory.org). Reservations are required. ■



**Bill Smart, center, with Norwalk, Connecticut officials in front of works by his uncle, Justin Gruelle**



**Above: The Early Birds Mural, by Justin Gruelle, depicts the history of aviation and once hung in the Smithsonian Art Wing. This significant art piece was found after years of searching, to honor his uncle's wish, by the artist's nephew, Bill Smart.**

### ANNUAL MEMBERSHIP RENEWALS DUE IN JANUARY

*Please mail the enclosed renewal envelope and your check today. Your contribution will play a vital role in preserving a very special part of East County History. The plans for 2014 are exciting—make sure you're a part of them. Please spread the word—you can make a difference.*

ALPINE  
HISTORICAL  
SOCIETY  
P. O. BOX 382  
ALPINE, CA 91903-0382

## President Carol Morrison's Annual Report

2013 was another productive year for the Alpine Historical Society. As I remember the milestones of the year, let me thank all of you who made these things happen.

Following are some of the highlights of the year:

- After a call went out to raise funds to purchase

a doctor's buggy, Alpine's Don Walker came forward and donated an historic family buggy. Donated funds were then redirected and are going toward restoration of the wonderful old buggy

- A long-time dream of Archivist Jim Hinds became reality when

boxes of historic Alpine Newspapers were scanned and made available via electronic means.

- A huge eucalyptus tree, deemed unsafe by an arborist, was removed from the Historical Society property and the wood was donated *(continued on page 3)*



**Carol Morrison**

## Justin Gruelle—A Diversified Artist

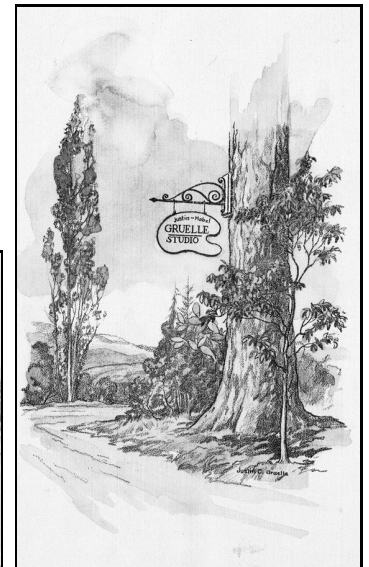
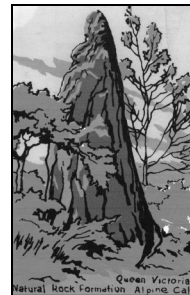
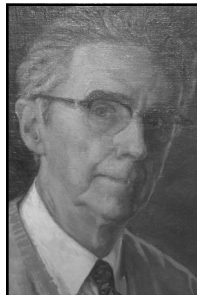
Shown below are examples of some of the works of Justin Gruelle. The diversity of his talent is evident—from oil on canvas landscapes to huge murals and from sketches of popular landmarks to illustrations in a children's book. His work

included cartoons, advertisements, portraits and covers for sheet music. Perhaps best known for creating murals under the Works Progress Administration Program (WPA), Gruelle, his wife Mabel, son John Paul and daughter

Jane came to Alpine in 1955 and purchased a home on Lilac Lane in Alpine Heights. The nearly life-sized Stations of the Cross he was commissioned to paint shortly after the new Catholic Church was built hung in the church

from 1959 until they were replaced in 2012. They are currently on loan to the Historical Society.

Examples of his work will be on display at the Special Event on February 16<sup>th</sup>. Be sure to attend this event. It will be memorable. ■



**Top row: Right and left—two of the murals painted as part of the Works Progress Administration (WPA) project. Center—Children's book written and illustrated by Justin Gruelle. Middle row: Left and right—two examples of sketches of places of interest in Alpine. Center—the artist's self-portrait. Bottom row: Left—painting (oil on canvas) "Shadows in the Valley." Center and right—sketches of Gruelle home and studio on Lilac Lane.**

## President Carol Morrison's Annual Report *(continued from page 2)*



**Docent Bill Waterworth explains the restoration process of the doctor's buggy, donated by Don Walker, during the Alpine History Day Celebration in June**

- Monthly meetings of the Board of Directors were held to make plans for the future.
- A Community Enhancement Grant from San Diego County was applied for and received.
- A popular new newspaper column, Alpine History Mystery, was created by Tom Myers and now appears in *The Alpine Sun* and the Alpine Community Network.
- Communication continues to be expanded through many additions

to the website, the monthly Tattered Tidbits column in *The Alpine Sun Spot Shopper* and the newsletter.

- School, individual and group tours of the museums were conducted.
- The ALPS Award Ceremony and other Alpine Chamber of Commerce activities were attended.
- Historic scrapbooks created by the Alpine Library Friends Association were scanned and copies were made available.
- Quarterly meetings were held with informative speakers. These

included a memorable presentation, Witness to Gettysburg, and a photo preservation workshop.

The volunteers and the donors who always step up to support the Society make these milestones happen. Thanks to each of you for your dedication, support and commitment to continuing to preserve the history of our community.

I wish everyone a happy, healthy, and prosperous New Year. I hope to see you at our special event in February and at other activities throughout the year and encourage you to become a volunteer. ■

## Thanks to Supporters

Sincere thanks to the following renewing members: Sallie Brown and Tom Curtin. Welcome new members G's Prime Deli, Richard and Barbara Tighe and Alice Becker. Thanks also to Shirley Dyer and Tom Curtin for their recent monetary contributions. Your support helps to allow the Alpine Historical Society continue its work to preserve the rich history of Alpine. Thank you. ■



Descendants of Dr. Nichols, Alpine's first woman doctor, visited the museum recently. Standing in front of the doctor's buggy are, from left, Carol Morrison, Laura Coon, Donna Sisson, Joe Sisson, George Anderson and Deborah Anderson. The Sissons and Andersons are direct descendants of Dr. Sophronia Nichols whose home is now our museum. While they were here, a field trip to Roy Athey's Descanso, Alpine and Pacific Railway on Alpine Heights Road was taken. The afternoon ended with wine and cheese on the Nichols House porch—a delightful time was had by all.

## Preview of April Meeting

The April quarterly meeting will be held on Sunday, April 27<sup>th</sup>, and will feature speaker Jean Landis. As a Women's Airforce Service Pilot (WASP) during World War II, Jean shuttled fighter planes between U. S. military airfields and was one of 1,074 women who flew every type of military aircraft. She will share her love of flying with us. ■



**Alpine's Viejas Day Parade—October, 2013**

**Left: Sam Walker drives his tractor pulling Don Walker's antique flat bed wagon. Riding on the float were two winners of the third grade essay contest, Don Walker's grandson and great-grandchildren and Bill Waterworth along with, in period costume, Joan Waterworth and Elma Terry.**

**Alpine Historical Society**  
**P. O. Box 382**  
**Alpine, CA 91903-0382**

**Address Service Requested**

PRSRT STD  
U.S. POSTAGE  
PAID  
EL CAJON, CA  
92020  
PERMIT NO. 349

**ALPINE HISTORICAL  
SOCIETY**

2116 Tavern Road  
P. O. Box 382  
Alpine, CA 91903-0382

Phone: 619-659-8740  
E-mail: [info@alpinehistory.org](mailto:info@alpinehistory.org)

We're on the Web!  
[www.alpinehistory.org](http://www.alpinehistory.org)

### **Your Will Can Make a Difference**

Including the **Alpine Historical Society** in your will can be a convenient way to leave a lasting legacy to your community. The development of **Heritage Park**, educational programs and preservation of the history of **Alpine** will be made possible by people who had the foresight to include the **Alpine Historical Society** in their estate plan.

After providing for loved ones, your will can carry out your wishes by directing that a gift be made in one, or a combination of, the following ways: a specific dollar amount, a percentage of an estate, the remainder of an estate.

Bequests should read as follows: "I bequeath to the **Alpine Historical and Conservation Society** (our legal name), \_\_\_\_\_, to be used for the support of the **Society's** programs."

The **Society** is available to consult with your attorney about the best way to use your will, living will, trust, insurance policy or other estate plan to help develop and maintain the historic resources in **Alpine**. Your attorney can provide you with details about the estate benefits that can result from your bequest.

If you have already included the **Society** in your estate plan, please let us know so that we may thank you. Your gift will make a difference to your community.■